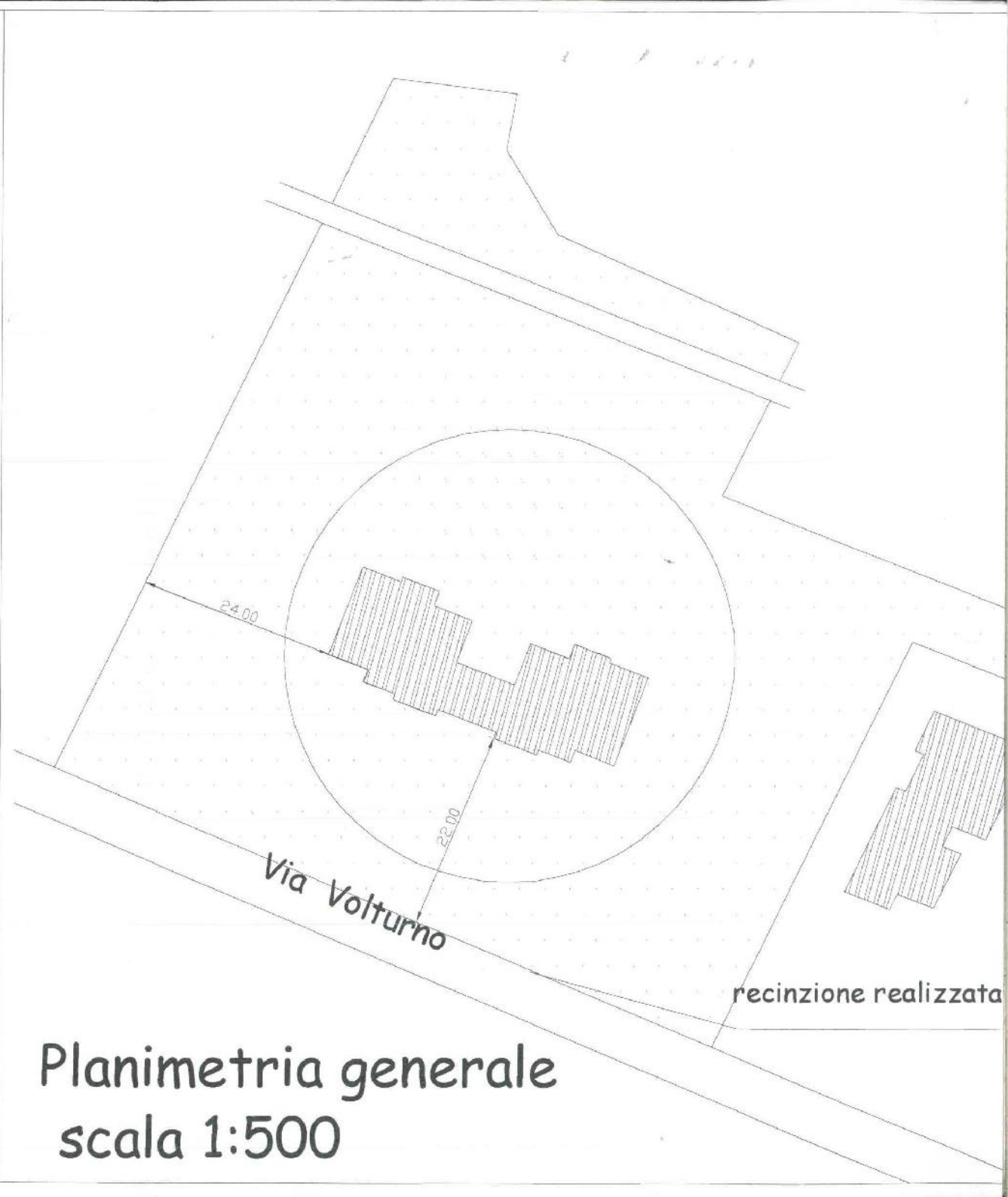




Planimetria generale
Fgl. 20 p.lla 37

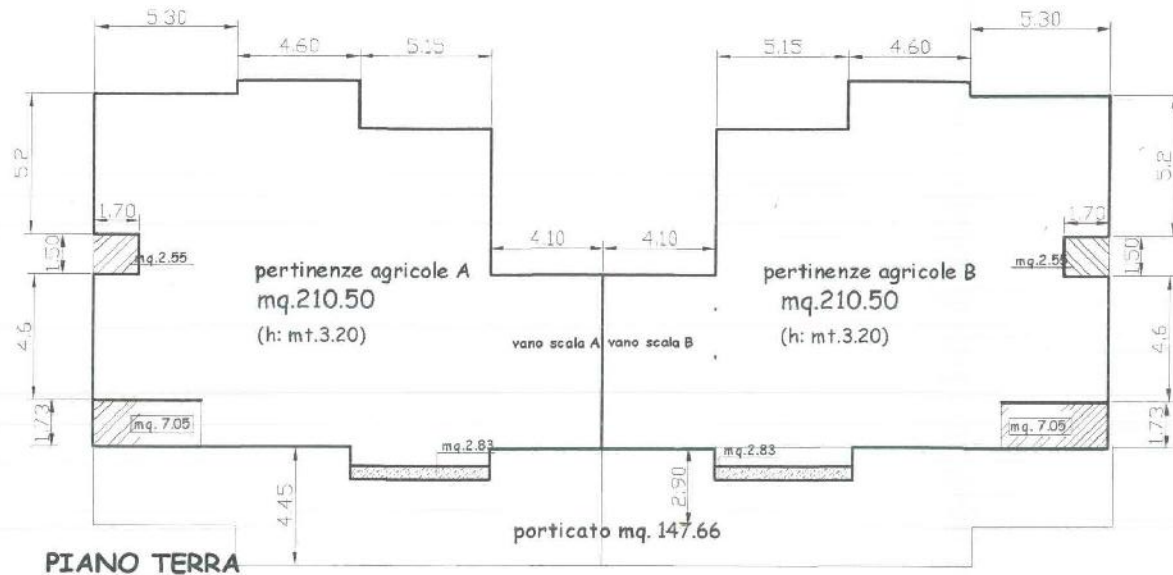
scala 1:2000



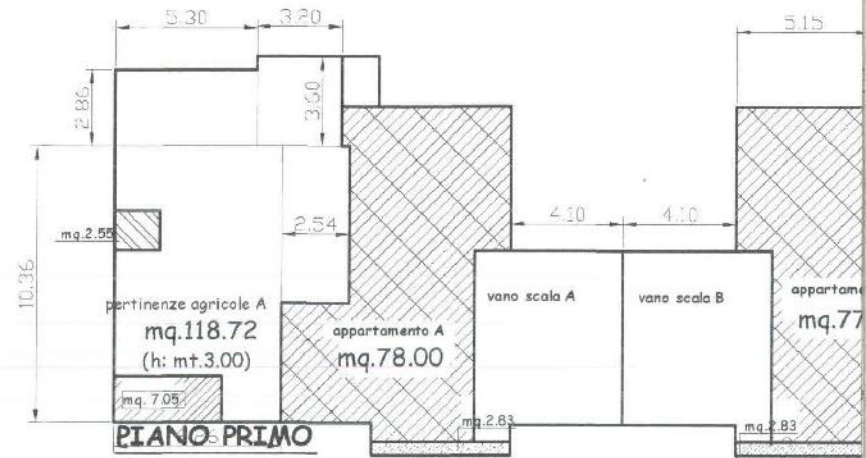
Planimetria generale
scala 1:500

Progetto per il condono ,ai sensi del D.L. 724/94 ,di alcune opere abusive realizzate con c

CALCOLO PLANOVOLUMETRICO



PIANO TERRA



PIANO PRIMO

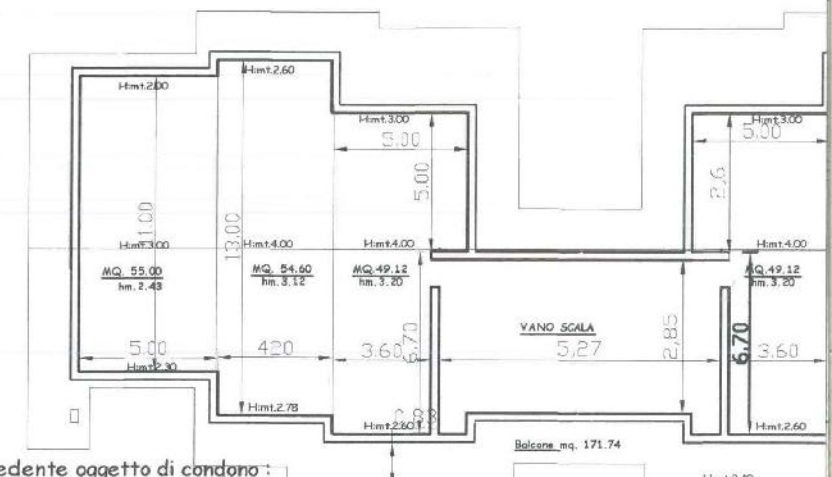
- piano terra - pertinenze agricole (A+B):
 - sup. di progetto + sup. abusiva
 $mq. 421.00 + 2 \times (7.05 + 2.55 - 2.83) = mq. 421.00 + 13.54$ (sup. abusiva non resid. al p.T.)
 - vol. di progetto + volume abusivo:
 $mc. (421.00 \times h. 3.20) + (13.54 \times h. 3.20) = mc. 1347.20 + mc. 43.32$ (v. abusiva non resid. al p.T.)
- porticato (la sup. del porticato è diminuita rispetto al progetto (mq.155.50) in quanto la sup interna abusiva ha occupato parte del porticato esterno)
 $mq. 147.66 \times 3.20 = mc. 472.51$

- piano primo -abitazione (A+B) - cambio di destinazione d'uso :
 - mq. 78.00+ mq. 77.20=mq. 155.20 = sup. utile d
 - mq. 155.20 x h 3.00=..... mc. 465.60 = cubatura c
- piano primo : pertinenze agricole
 pert. agric.(A+B+abusi)=mq. 118.72+mq. 121.28+mq. 13.54+mq. 240.50+ mq. (240.50 x 3.00)+mq. (13.54 x h. 3.00)=mc. 721.50+ 40

LEGENDA

- Realizzato in piu'
- Realizzato in meno
- Annessi agricoli
- Abitazione

Le altezze interne comprendono anche lo spessore del solaio.



PIANO SOTTOTETTO

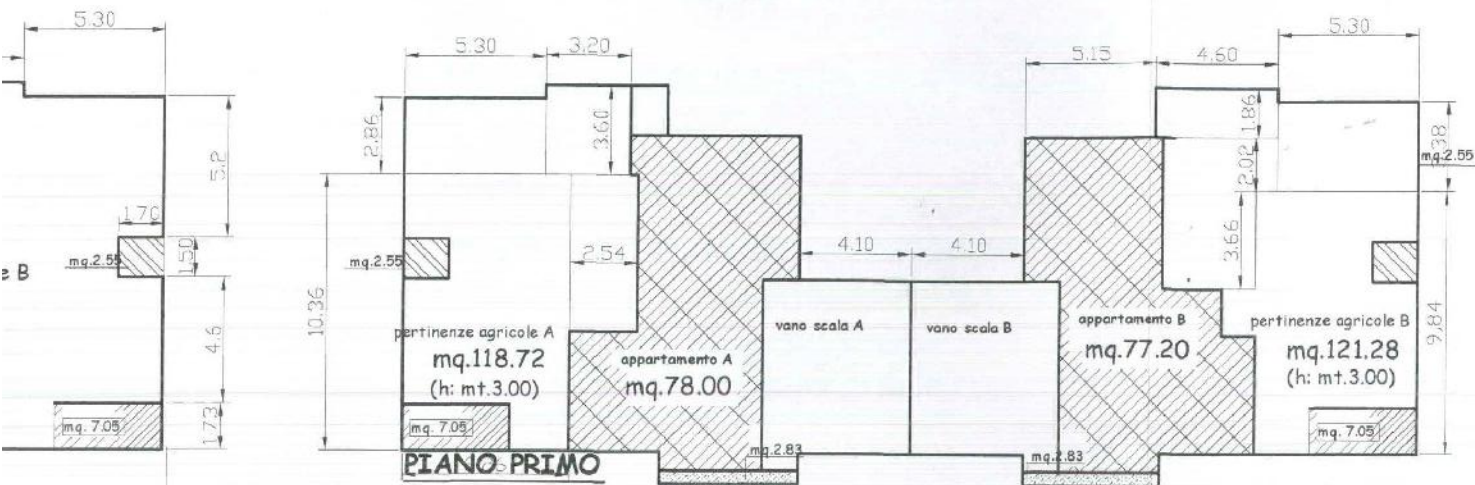
calcolo della superficie e cubatura eccedente oggetto di condono :
 SUP. abusiva interna (non RESIDENZIALE) ... $2 \times (55.00 + 54.60 + 49.12) = Mq. 317.44$
 Volume eccedente (le altezze sono prese al di sopra di quelle assentite con la concessione):
 SUP. non RESIDENZIALE, esterna-balconi = Mq. 171.74

RIEPILOGO degli abusi:

Sup. totale abitazione (cambio di destinazione d'uso) (A+B) = mq. 78.00 + mq. 77.20 = mq. 155.20 come da concessione n. 30/90
 Sup. non residenziale interna abusi (P. terra + p. 1 + sottotetto) = mq. (13.54 + 13.54 + 317.44) = Mq. 244.52 Cubatura totale pertinenze agricole (p. terra + p. 1 + sottotetto) = mc. (43.32 + 40.62 + 288.87) = Mc. 372.81
 Sup non residenziale esterna abusi (balcone sottotetto) = Mq. 171.74

del D.L. 724/94 ,di alcune opere abusive realizzate con concessione n.35 /90

COLO PLANOVOLUMETRICO



- piano primo -abitazione (A+B) cambio di destinazione d'uso :
 - mq. 78.00+ mq. 77.20=mq. 155.20 = sup. utile di progetto
 - mq. 155.20 x h 3.00=..... mc. 465.60 = cubatura di progetto
- piano primo : pertinenze agricole
 - pert. agric.(A+B+abusi)=mq.118.72+mq.121.28+mq.13.54+mq. 240.50+ mq. 13.54= Tot.mq.254.04
 - mq.(240.50 x 3.00)+mq.(13.54xh.3.00)=mc. 721.50+ 40.62= Tot.mc.762.12

in resid. al p.T.)

non resid. al p.T.)



SOTTOTETTO

sulla superficie e cubatura eccedente oggetto di condono :

SUP.abusiva interna(non RESIDENZIALE)... 2x(55.00+54.60+49.12) = Mq. 317,44

Volume eccedente(le altezze sono prese al di sopra di quelle assentite con la concessione):

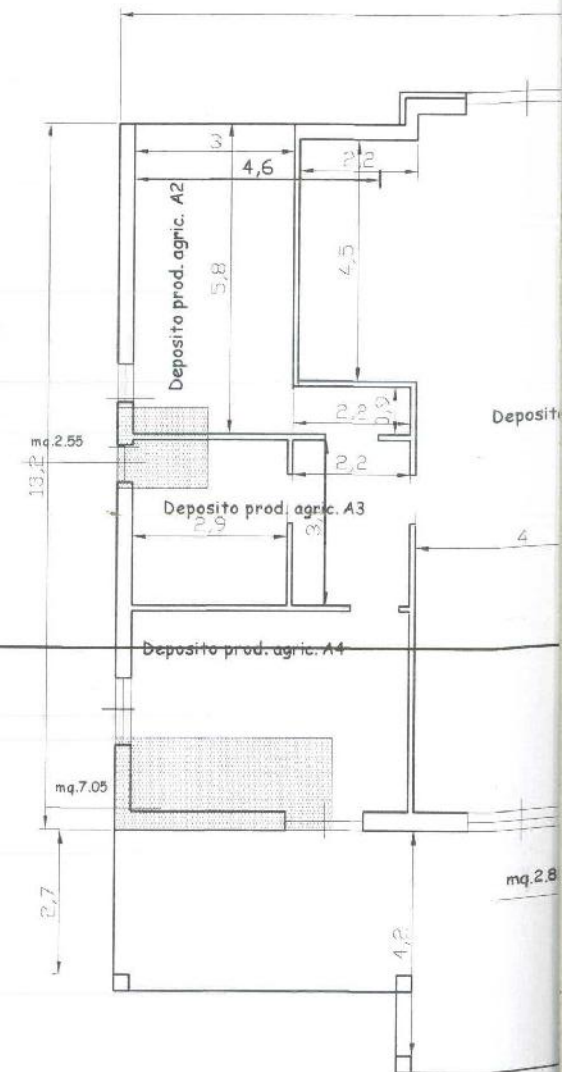
SUP. non RESIDENZIALE. esterna-balconi = Mq. 171.74

Mc. 317,44 x Hm 2(1.20+1.12+0.43)/6= Mc. 288,87

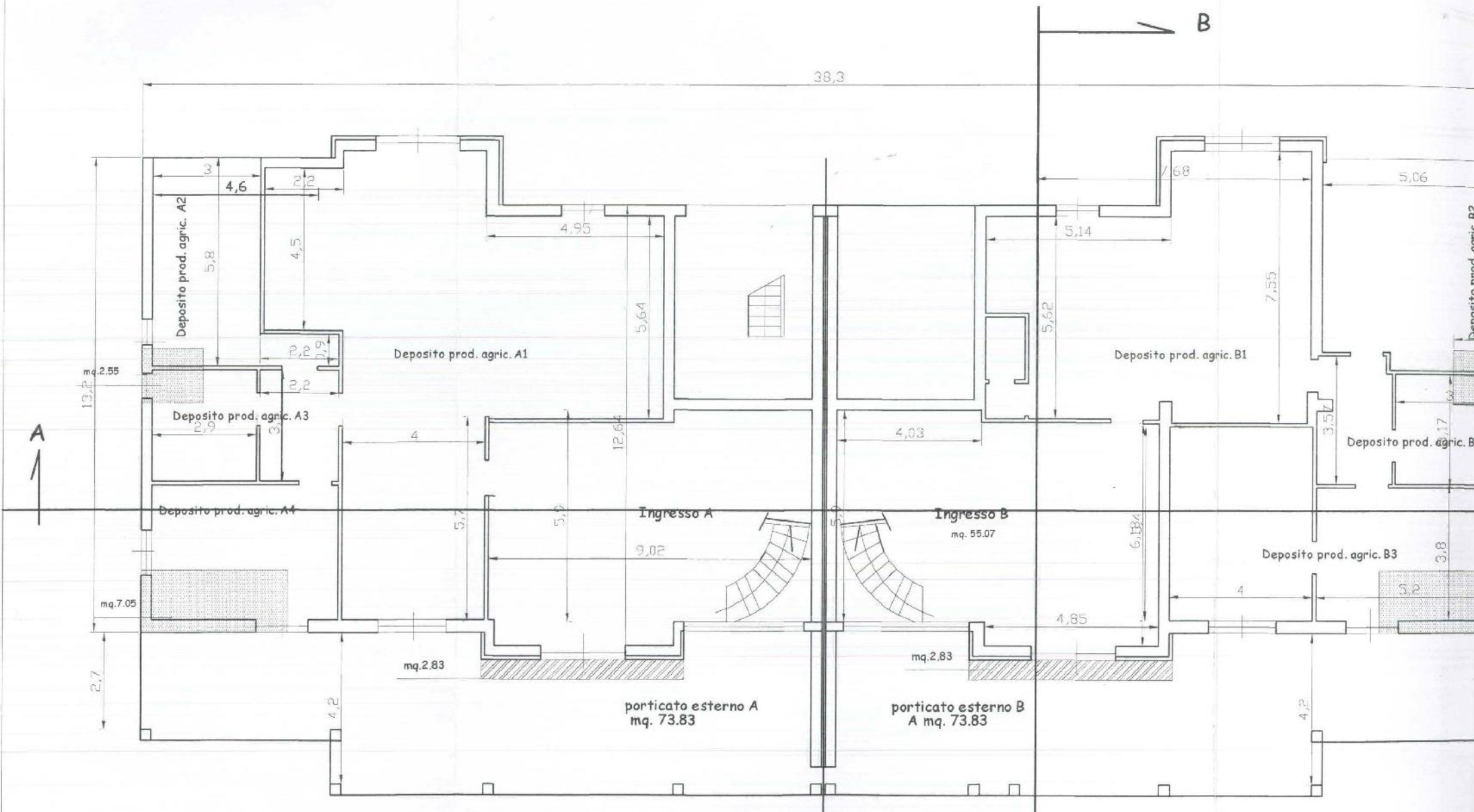
scala 1:200

me da concessione n. 30/90

4.52 Cubatura totale pertinenze agricole (p.terra+p.1+sottotetto)=mc.(43.32+40.62+288.87)=Mc. 372.81

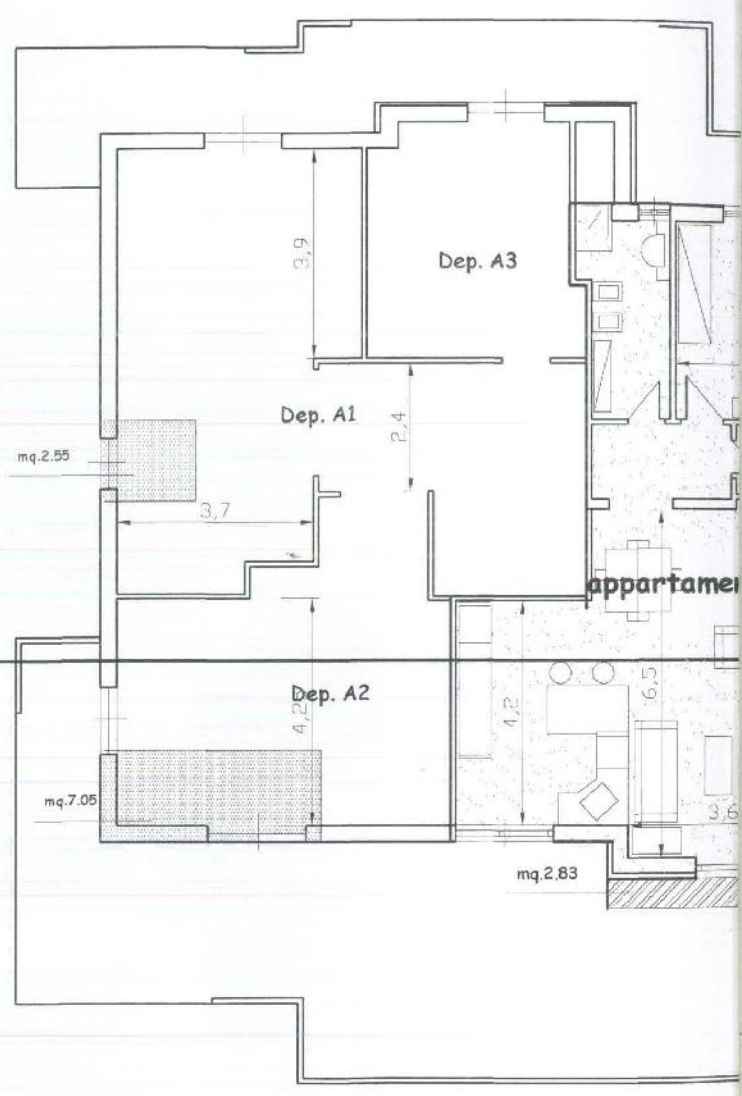
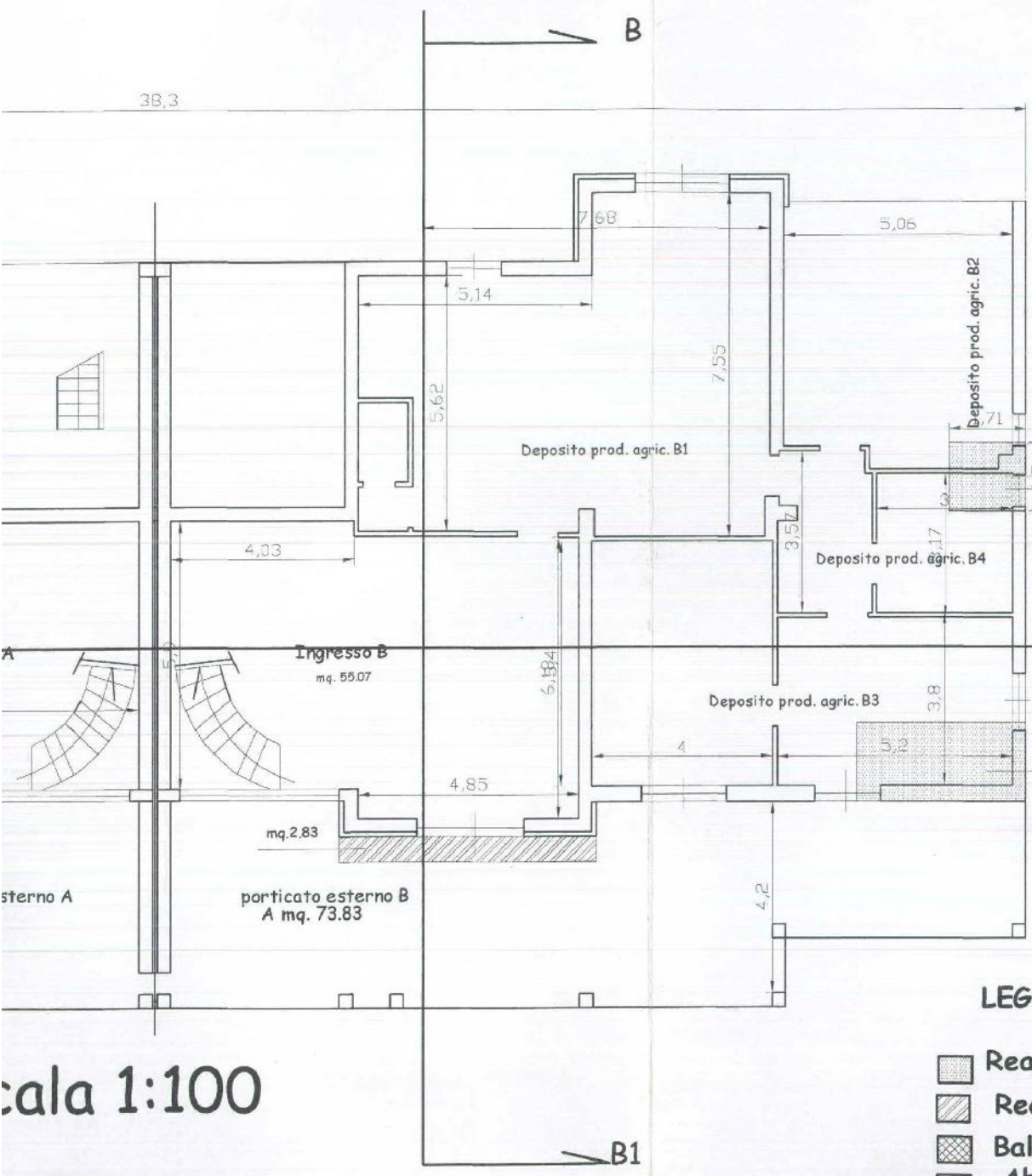


Piano







Piano Terra - scala 1:100





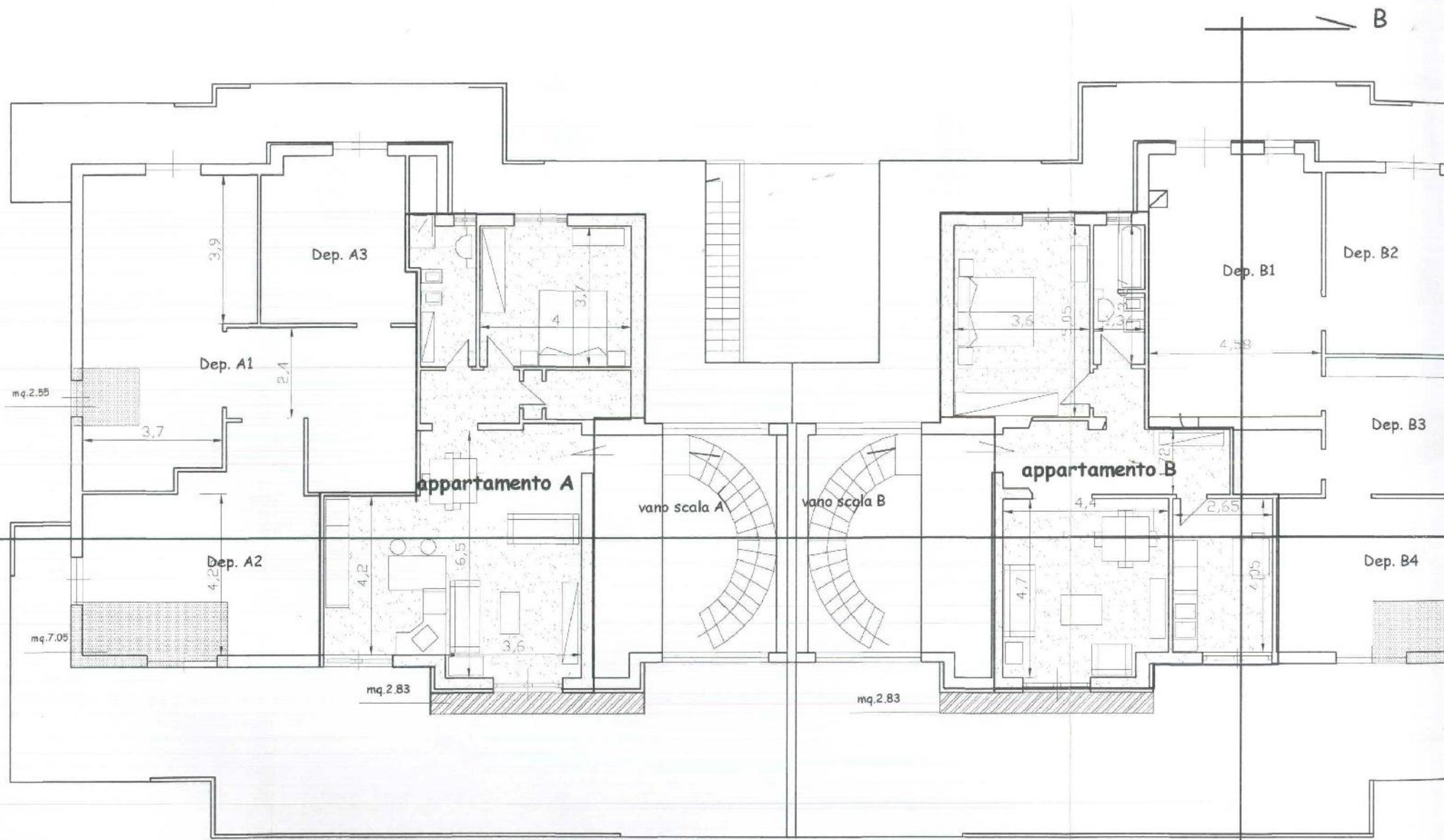
LEGENDA

-  Realizzato in piu'
-  Realizzato in meno
-  Balconi realizzati in piu'
-  Abitazione

scala 1:100

Piano Primo

A1

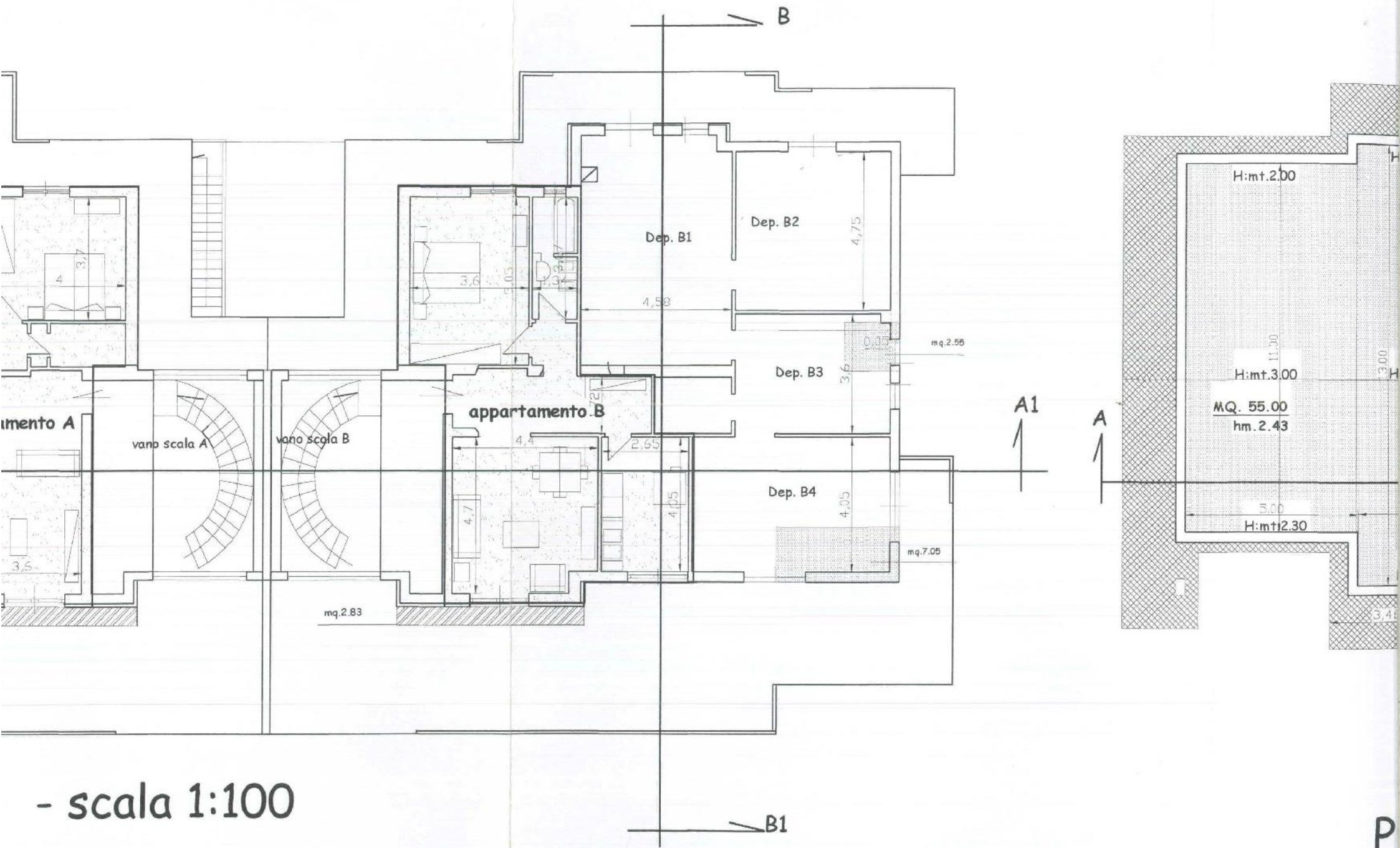


B

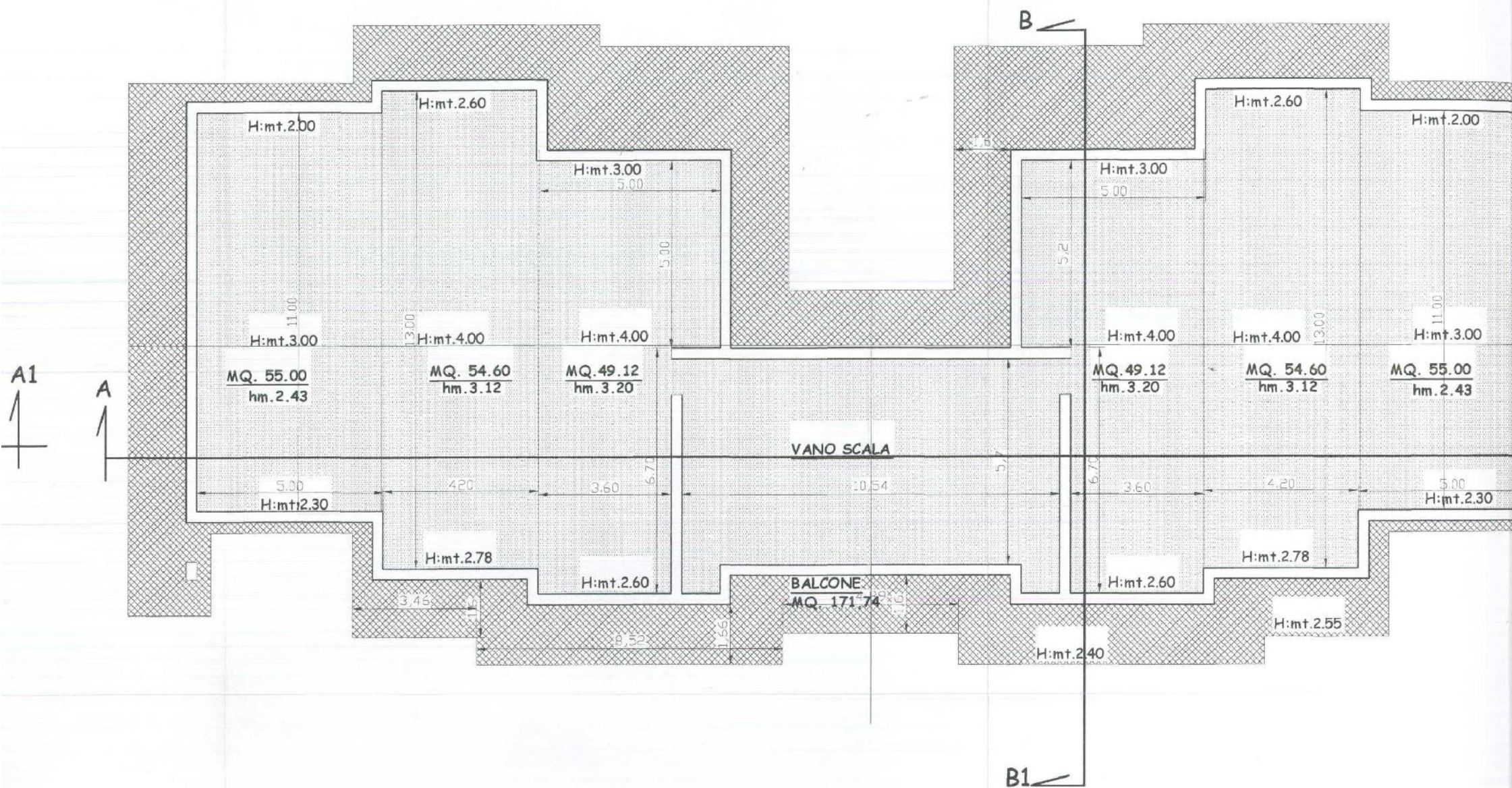
o in piu'
 to in meno
 ealizzati in piu'
 ne

Piano Primo - scala 1:100

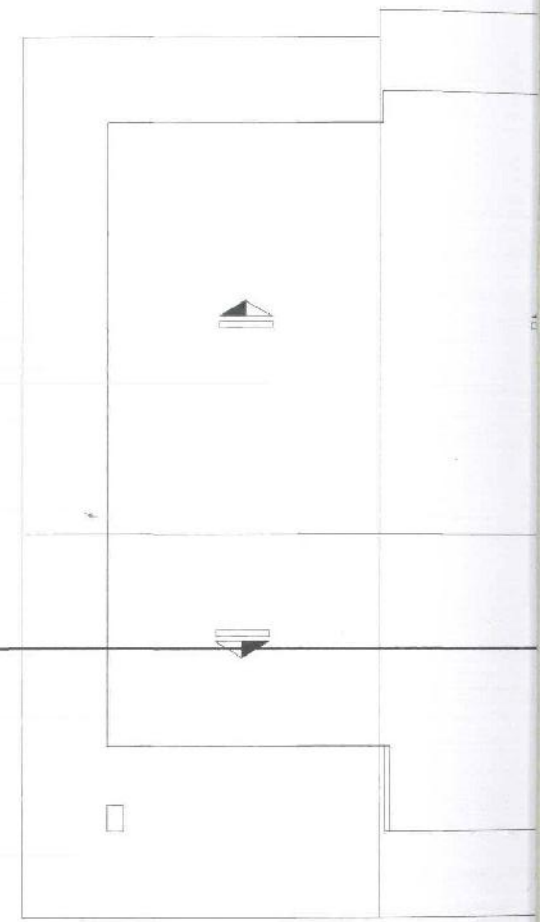
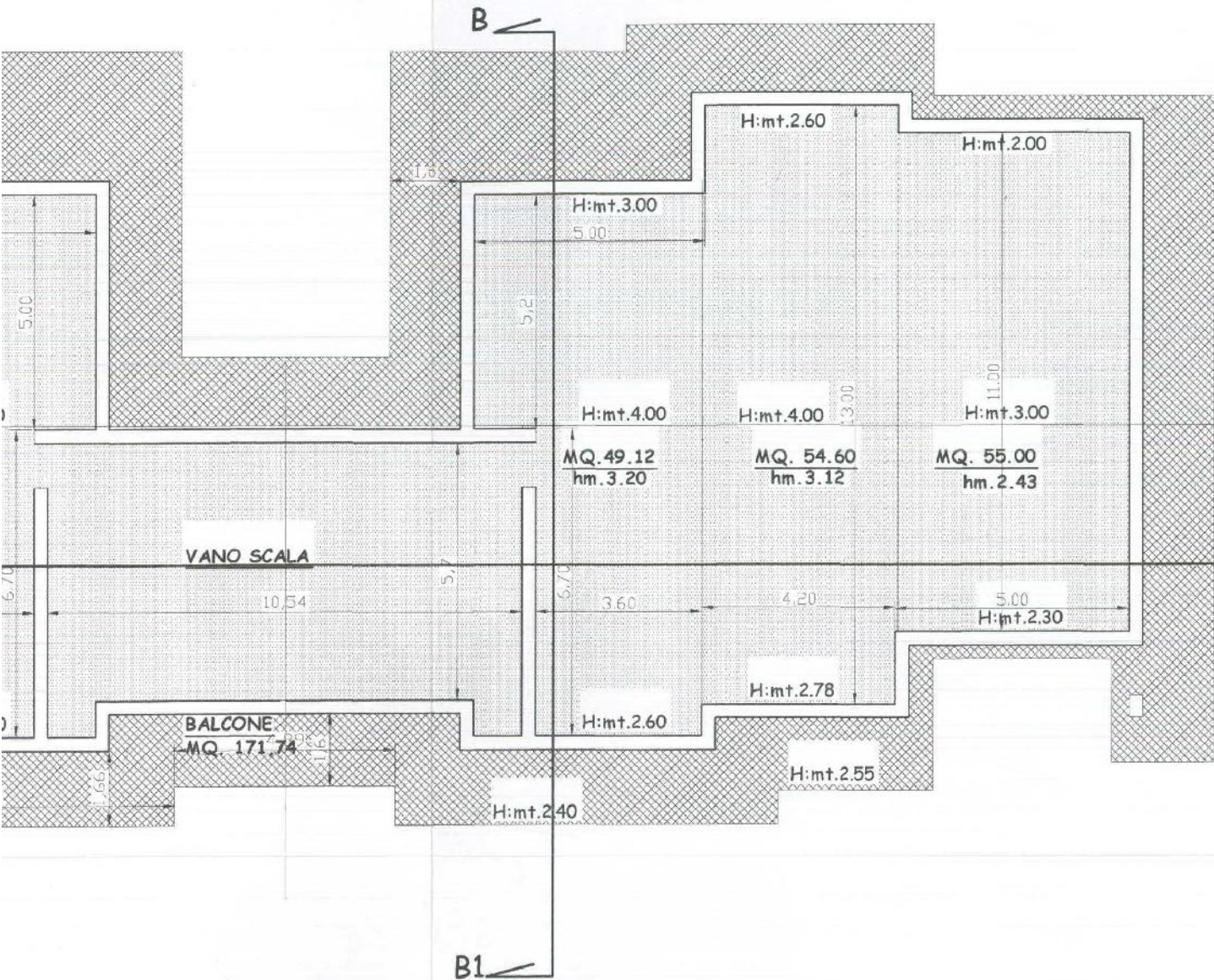
B1



- scala 1:100

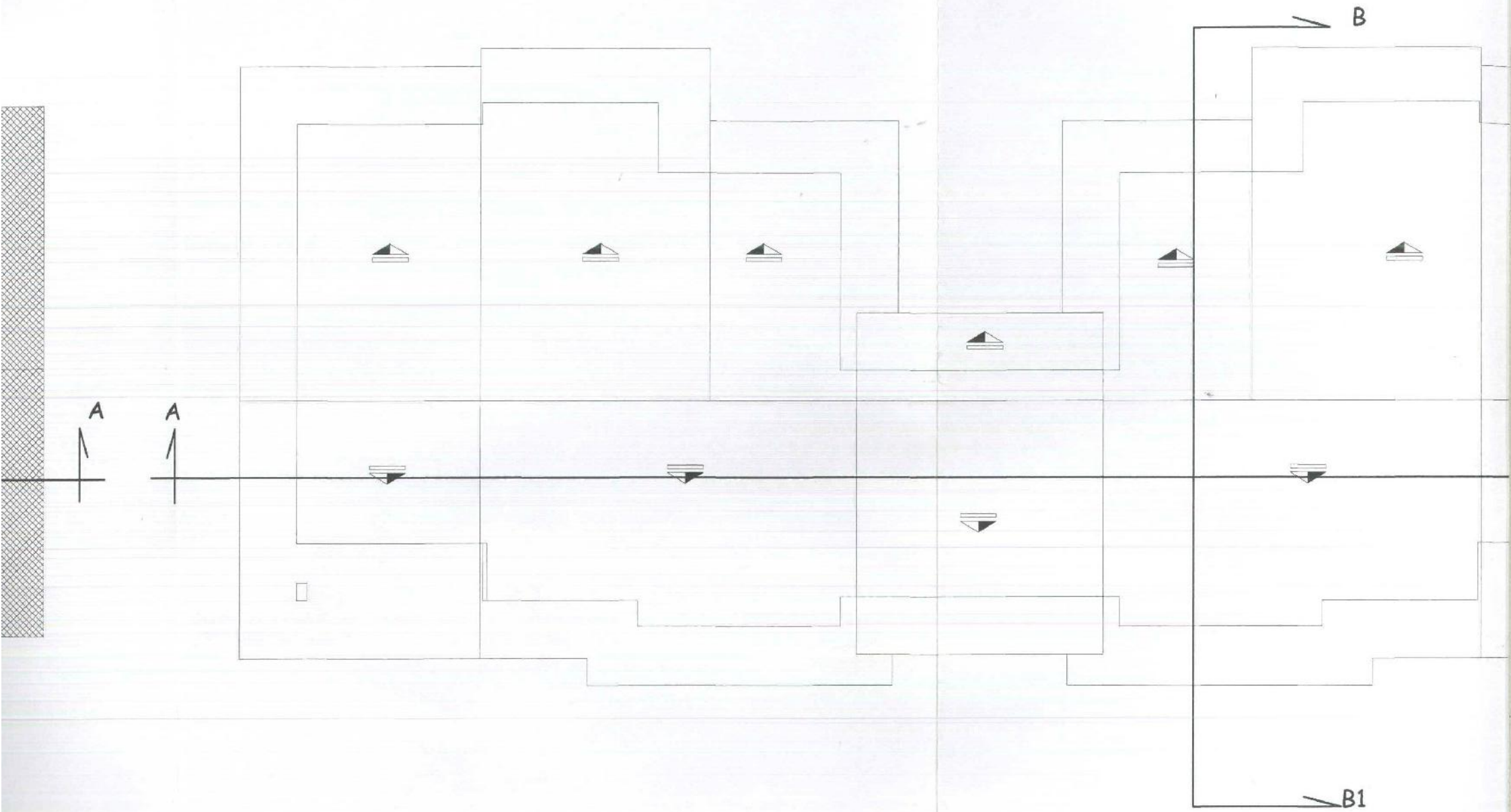


Piano Sottotetto - scala 1:100



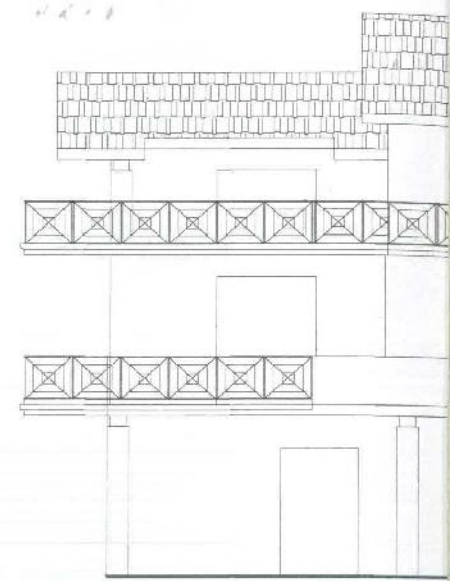
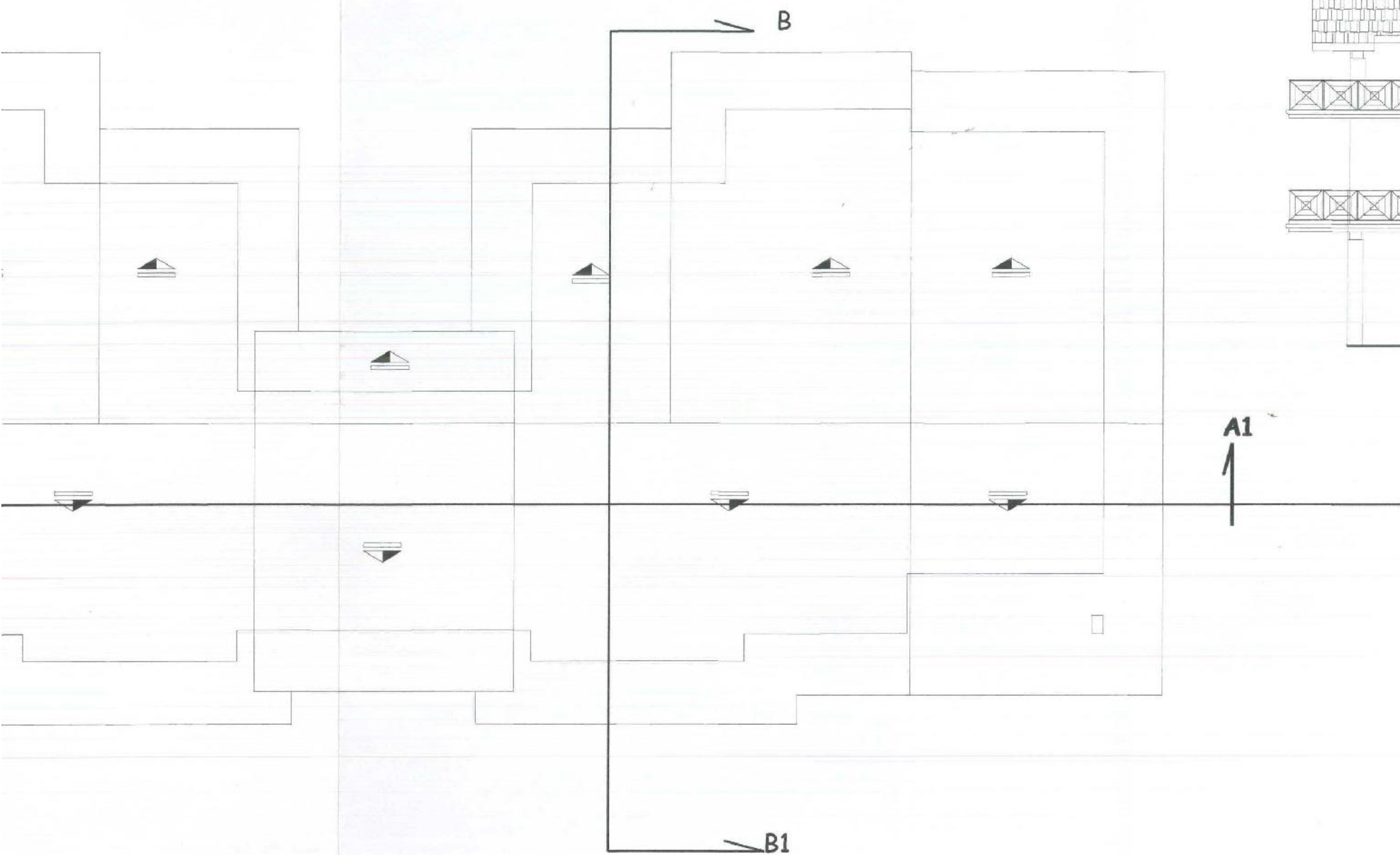
otetto - scala 1:100

Copertur

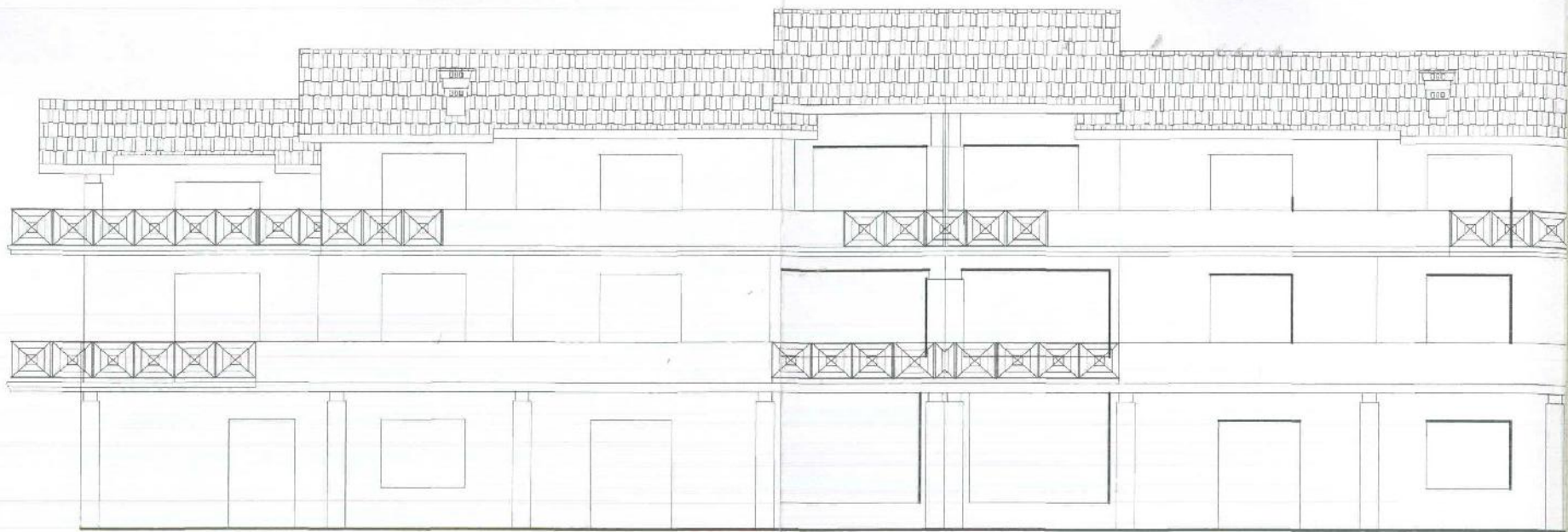


Copertura - scala 1:100

1 2 3 4 5

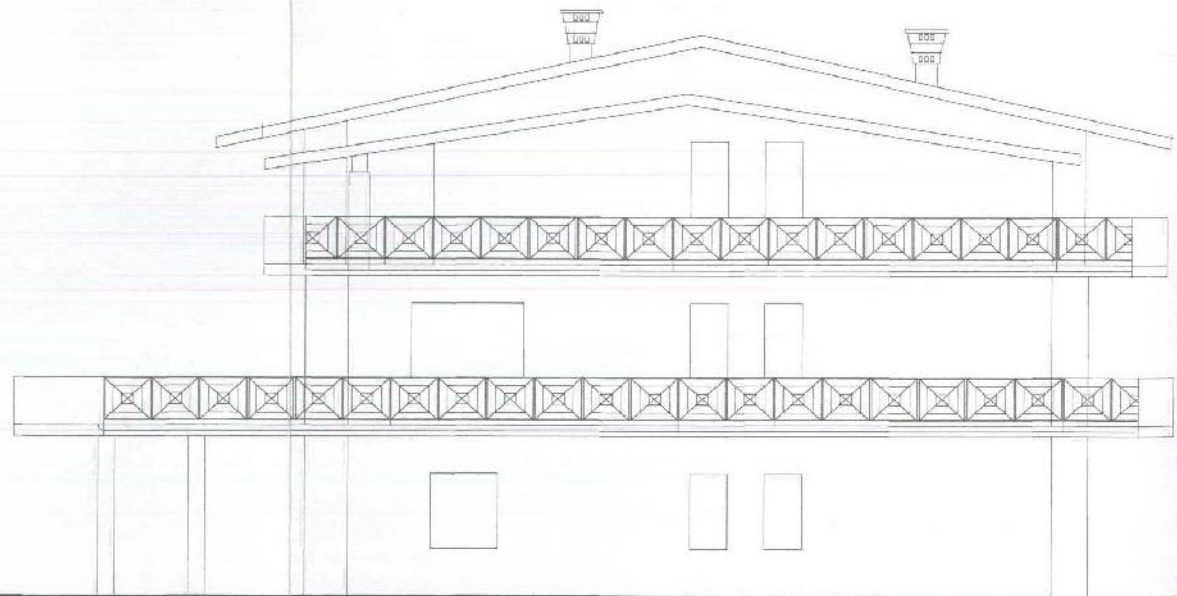


- scala 1:100



Prospetto OVEST - scala 1:100

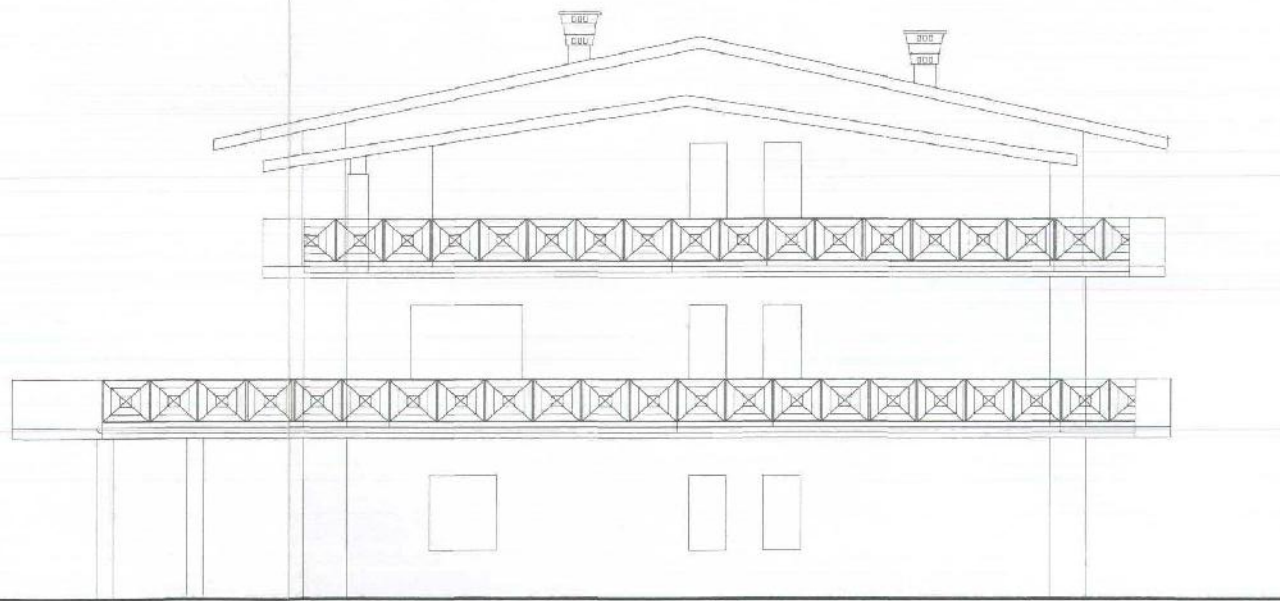
A1
↑



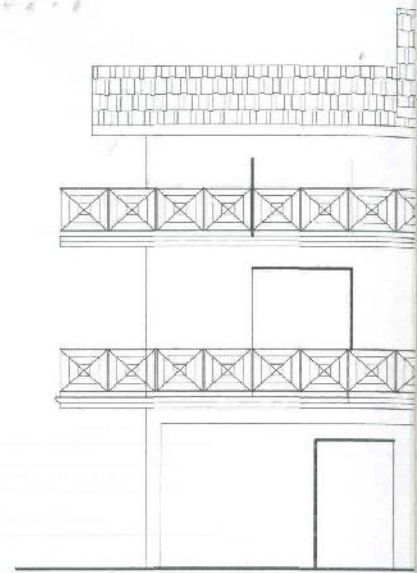
Prospetto SUD - scala 1:100



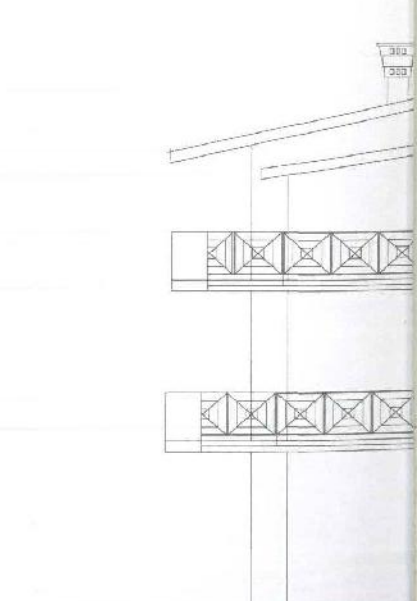
Prospetto OVEST - scala 1:100



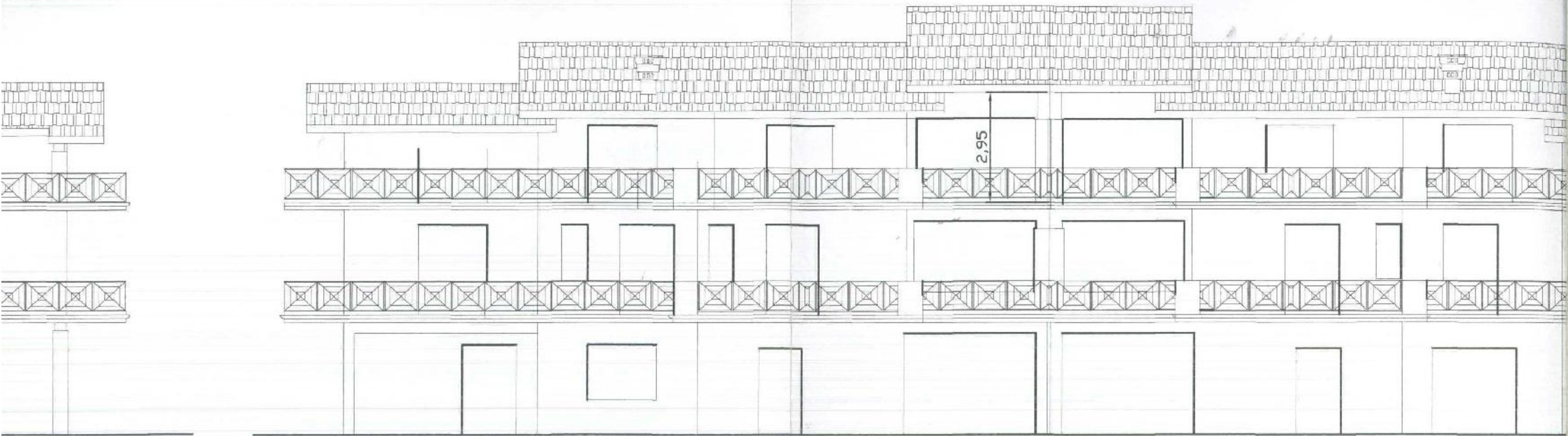
Prospetto SUD - scala 1:100



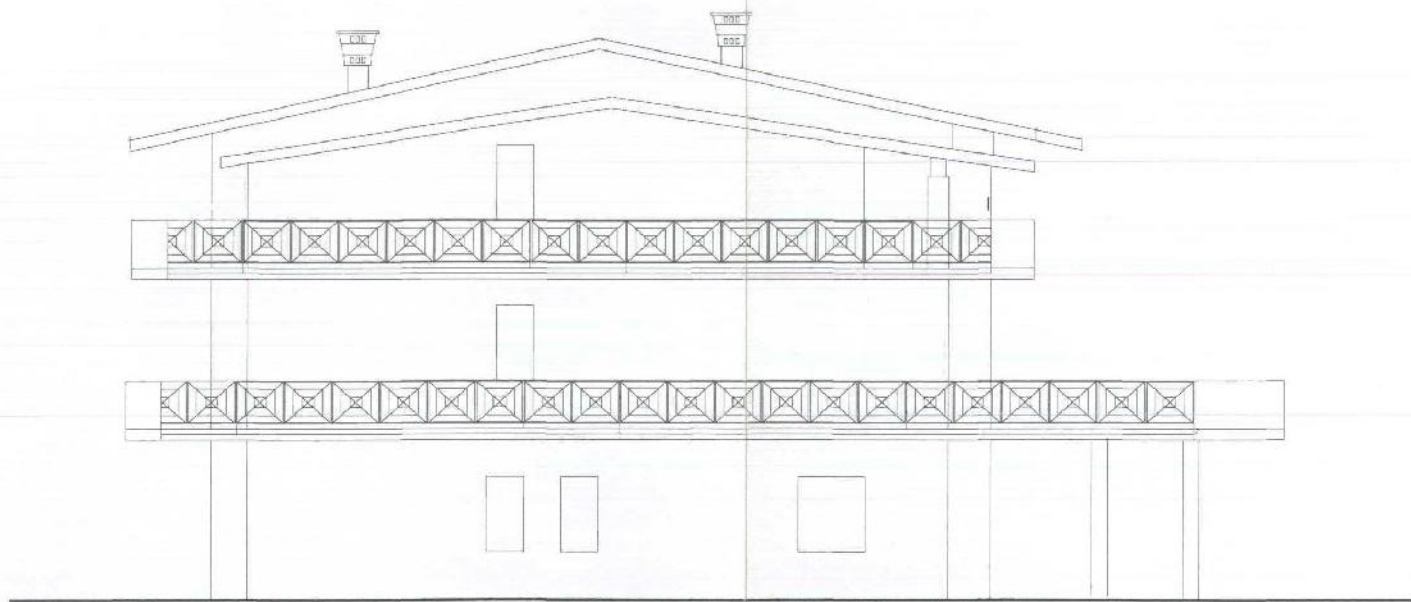
Prospetto EST - scala 1:100



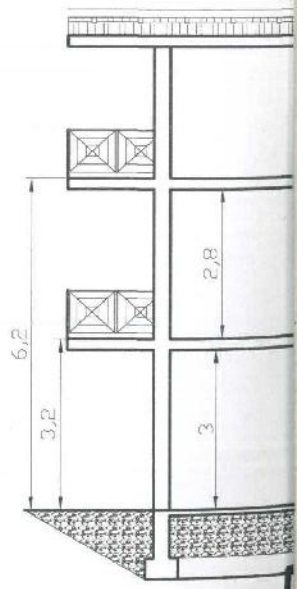
Prospetto NORD - scala 1:100

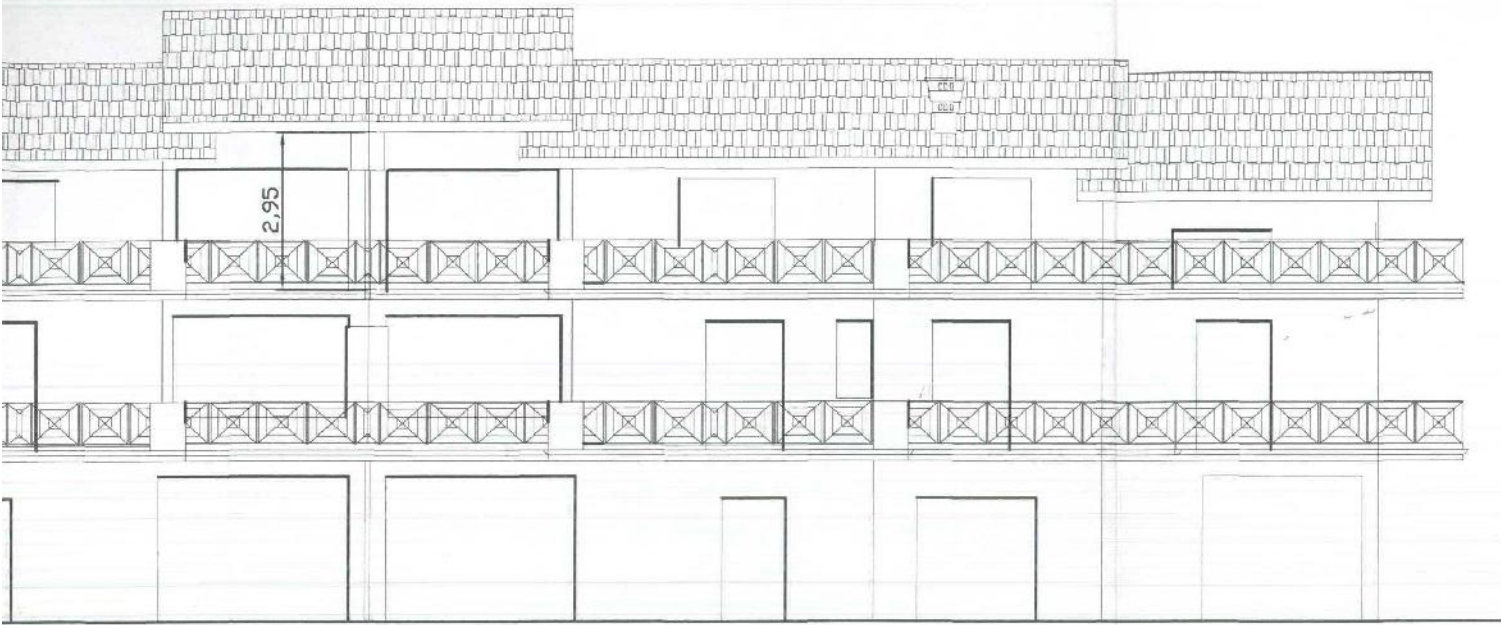


Prospetto EST - scala 1:100

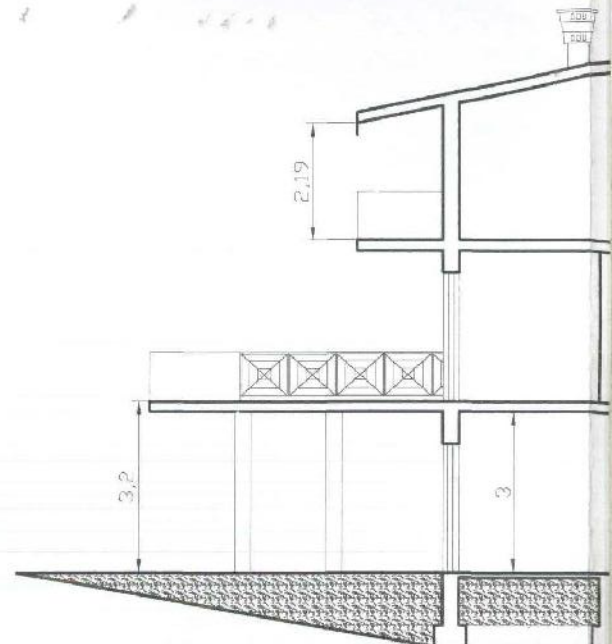


Prospetto NORD - scala 1:100

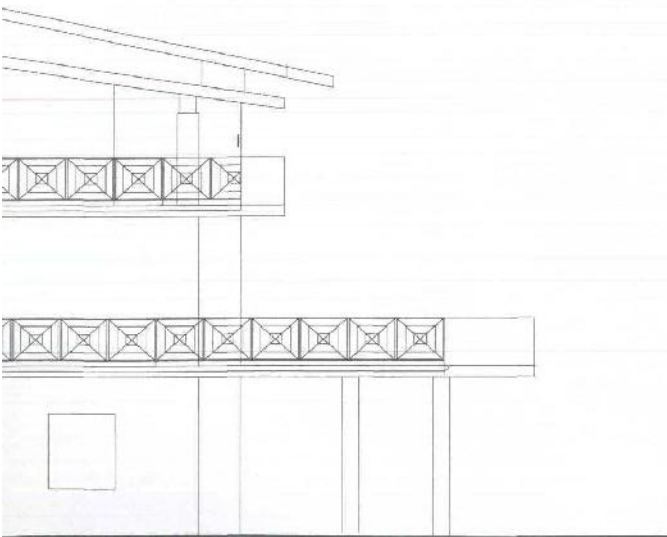




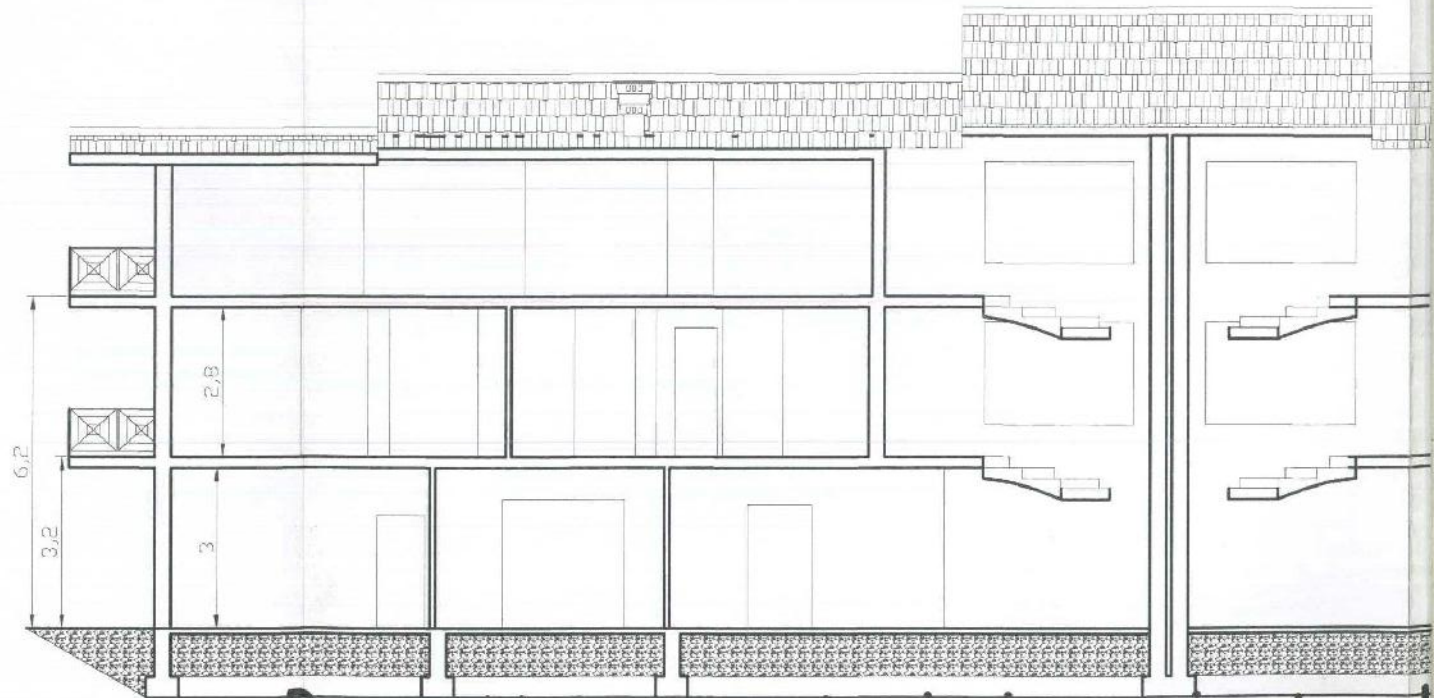
EST - scala 1:100



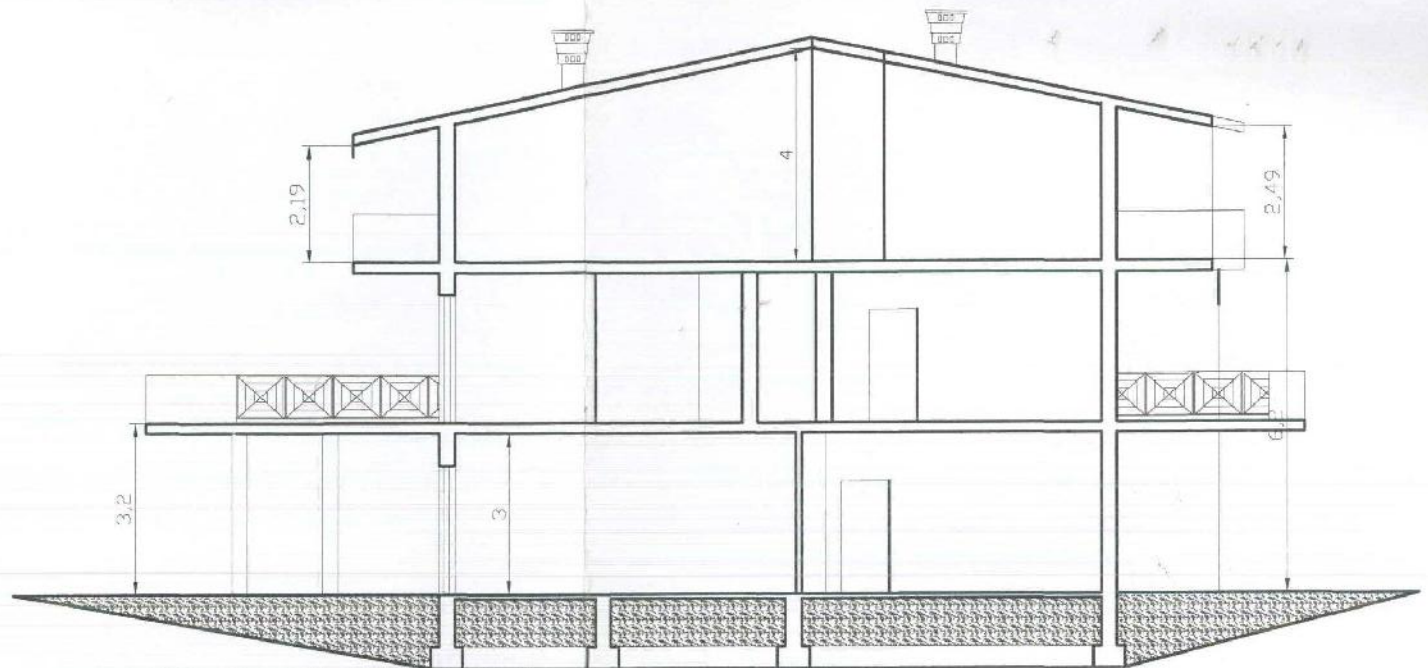
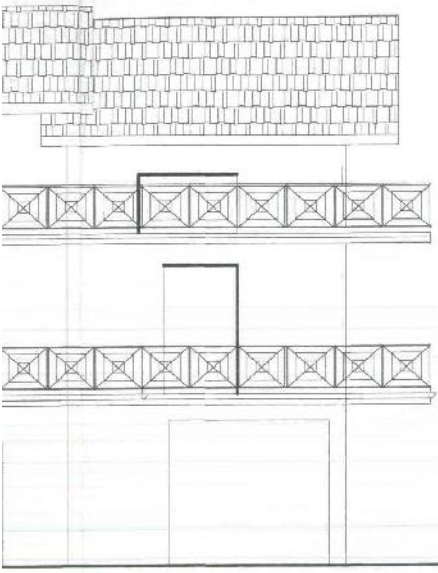
SEZIONE B-B1 - s



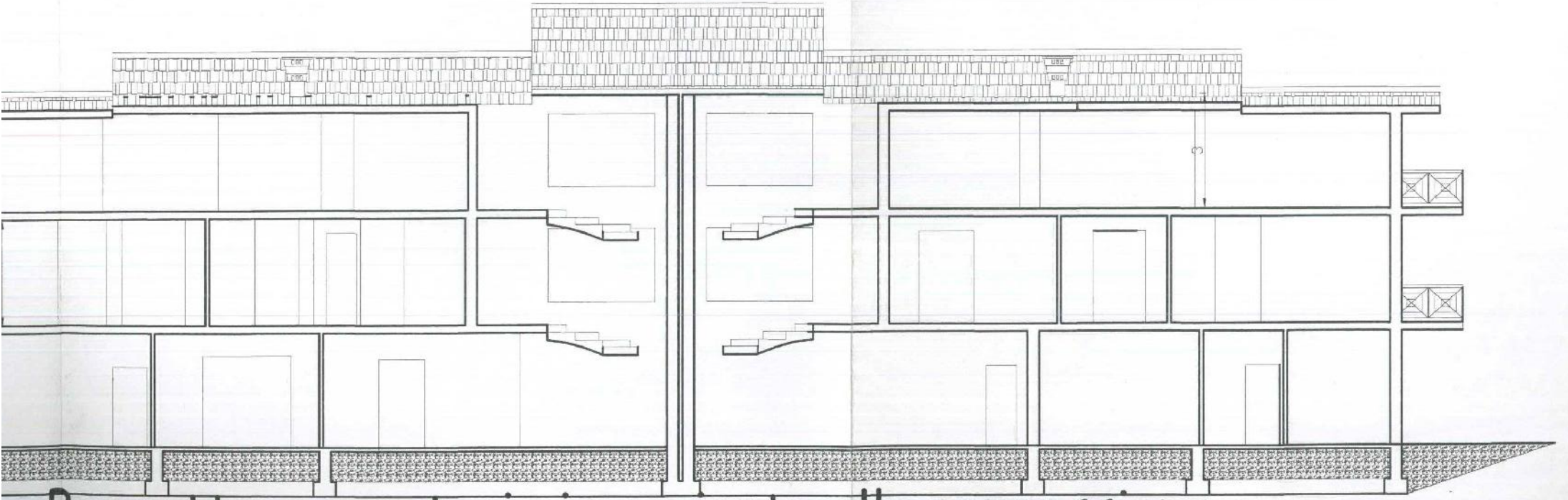
RD - scala 1:100



Progetto a sanatoria in variante al



SEZIONE B-B1 - scala 1:100



Progetto a sanatoria in variante alla concessione